


UNIVERSITÀ
DEGLI STUDI
DI PADOVA

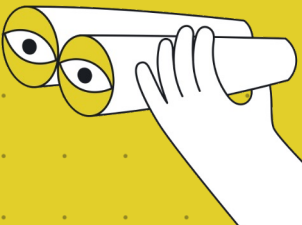
Etifor è uno spin-off
dell'Università di Padova



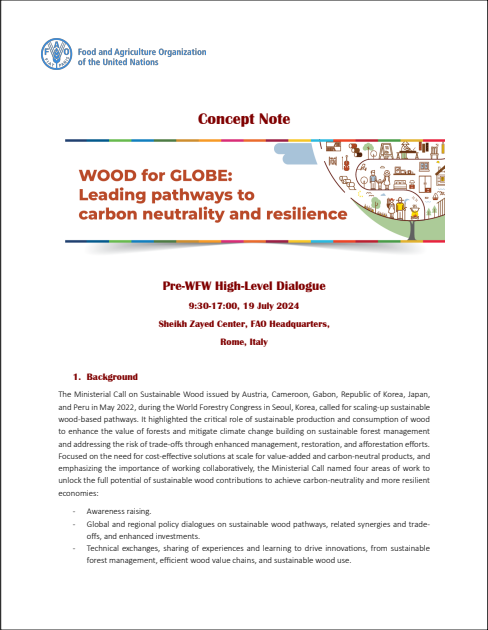
22 July, 2024

A notable recent trend in forest sector policies: the construction sector

Davide Pettenella



1



The message: to support SFM the key words for the large public are not protection, forest degradation & deforestation but...

GROW

THE SOLUTION

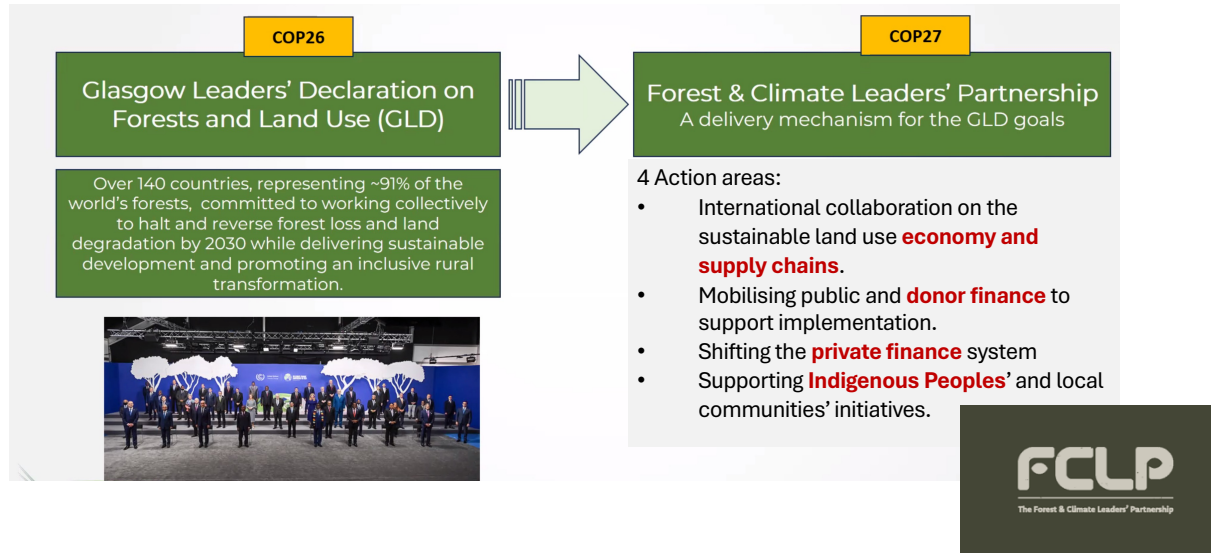
WOOD. NATURE'S SUSTAINABLE SOLUTION.

2

The background

The Forest & Climate Leaders' Partnership

<https://forestclimateleaders.org/>



3

Building sector: 36-40% of GHG emissions

(7% for the construction material: steel and cement)

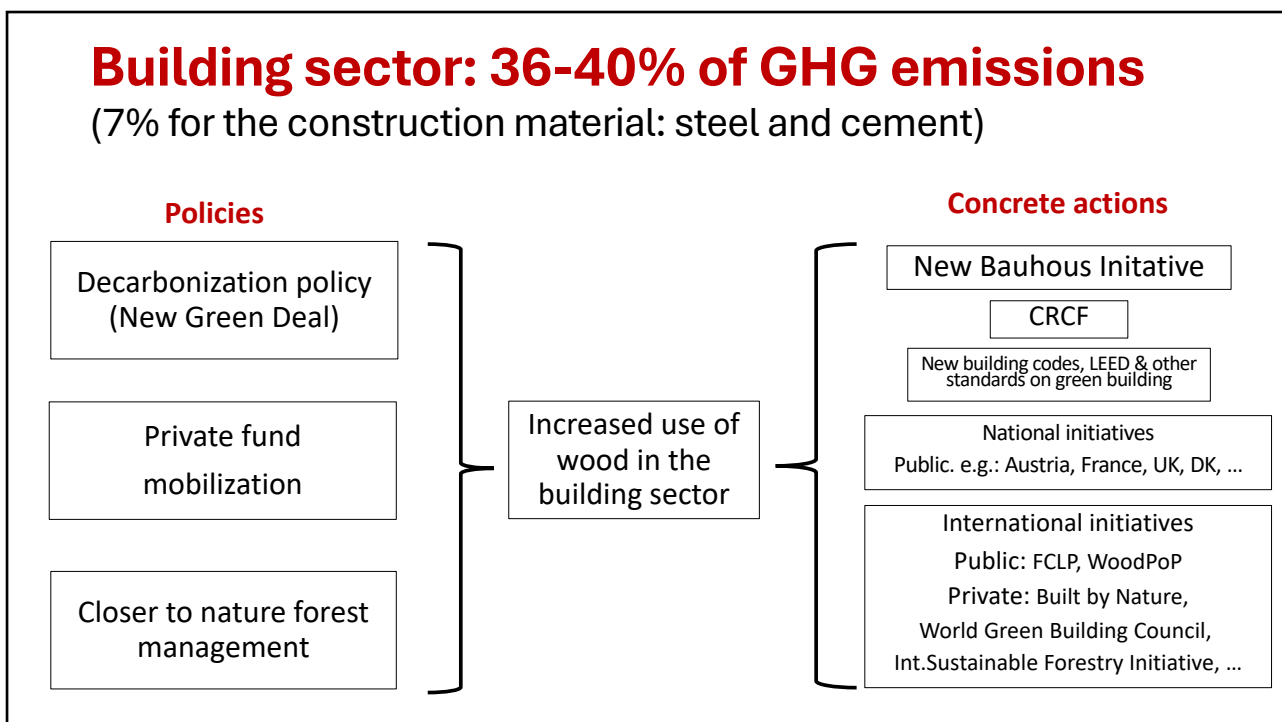


Increased use of
wood in the
building sector

4



5

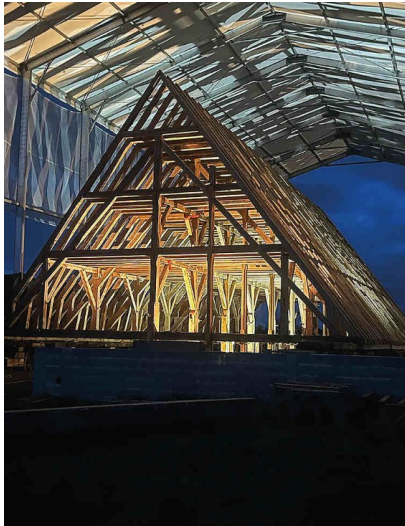


6

7

8

Notre Dame Cathedral in Paris (2019)



Oak roof trusses ready to be transported to Paris. Image: Remi Desmouts



The April 2019 fire that swept through Notre-Dame cathedral. Image: Loic Salan/Shutterstock

- 1300 oak trees
- 45 French sawmills involved in the construction of 36 cm beams
- 8 oak logs of exceptional size (+20 m)

9

France Bois 2024



FRANCE BOIS 2024 DOCUMENTATIONS FORMATION LE BOIS ET LES JEUX ANNUAIRE APPELS D'OFFRE

Paris Olympics:
40% with the
"Bois de France"
brand with a
30% emission
reduction effect
compared to
London and Rio



#5 Visite du groupe scolaire de 17 classes



#5 Visite du centre aquatique et son franchissement



#4 Visite des lots D1 et D2 du village des athlètes



#3 Visite des écoles du Bourget



#2 Visite de l'immeuble Bocken



#1 Visite de l'usine Mathis

<https://www.francebois2024.com/>

10

3 sectors considered in the EU Carbon Removal Certification Framework (CRCF)



PERMANENT STORAGE

E.g. Bioenergy with Carbon Capture and Storage (BECCS), Direct Air Carbon Capture and Storage (DACCS)



CARBON FARMING

E.g. Af-/re-forestation, improved forest management, agroforestry, soil carbon sequestration, peatland restoration



CARBON STORAGE IN PRODUCTS

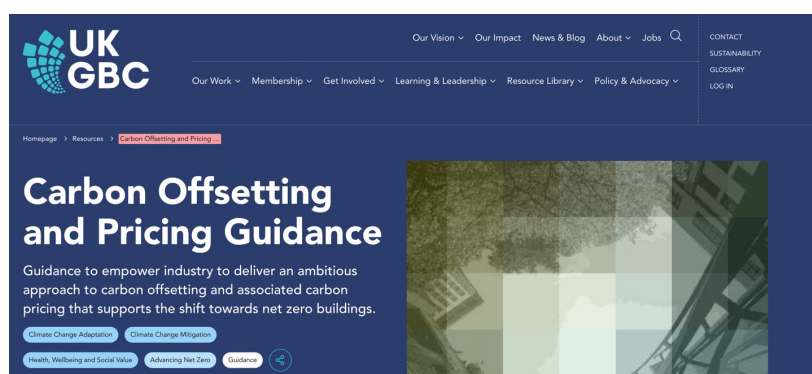
E.g. Use of wood-based materials in construction, long-lasting Carbon Capture and Utilisation (CCU)

Source: European Commission

11

Carbon sequestration credits from wooden construction: «best-in-class globally» (Supercritical, 2024)

<https://gosupercritical.com/blog?p=offsetting-guidance-for-the-built-environment>



<https://ukgbc.org/resources/carbon-offsetting-and-pricing-guidance/>

12

Green buildings: the most relevant urban Nature-Based Solutions!

Engineering Hub at UNIPD

- **2,540 m³ X-Lam** and **1,030 m³ laminated beams**: 4 floors, for 3,500 students, built in 2 months by Rubner (Brixen plant based on sawnwood from the group's Austrian sawmill in Styria - 400,000 m³/year)
- More info [here](#) and [here](#).



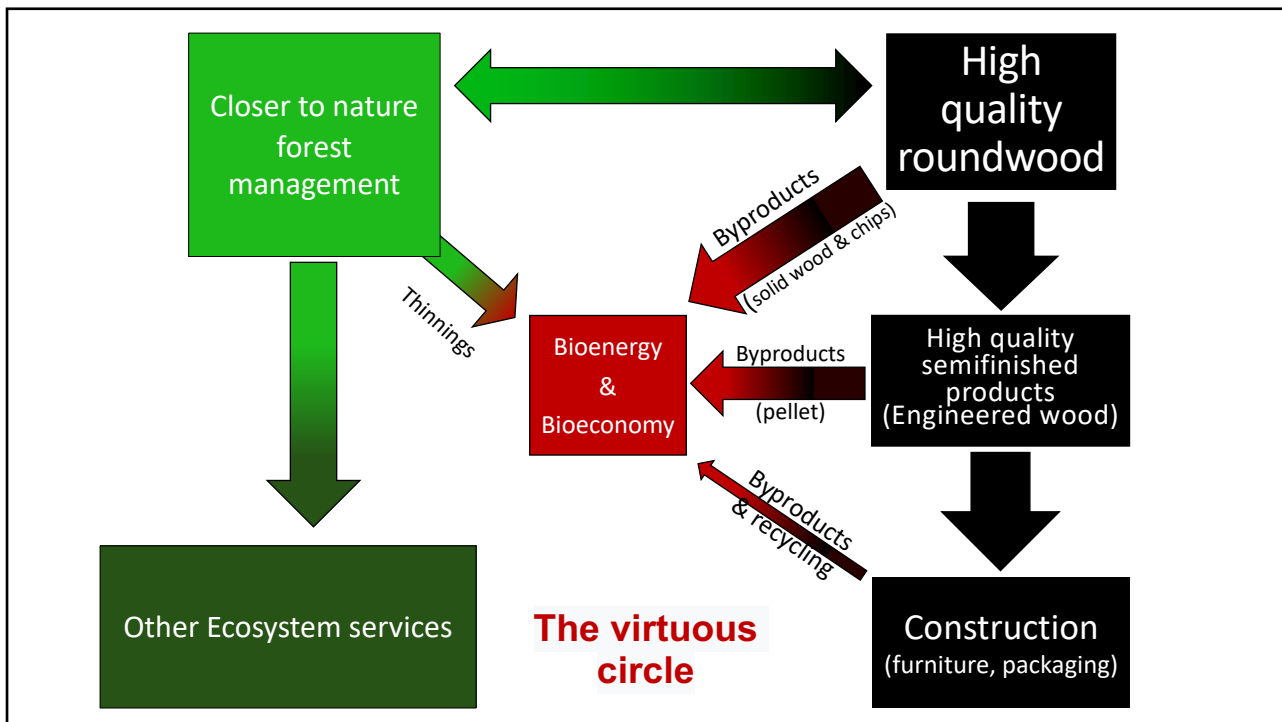
13

Food for thinking

Let's invest in closer to nature forest management (FSC certified), i.e. forestland improvement and active management, to be able to produce:

- **Timber + carbon credits** from the construction sector (safe, visible and profitable investments from the private sector)
- By-products for bioenergy and bioeconomy innovative segments with the «**cascade approach**» (e.g.: district heating - local scale community investments)
- **Other** relevant ecosystem services

14



15