



"Adapting Europe's forests to global challenges: Lessons from ALTERFOR"

XXV IUFRO World Congress

Curitiba, 1st October 2019

ITALIAN CASE: PEOPLE EVERYWHERE

Mauro Masiero¹, Giulia Corradini¹, Alex Pra² and Davide Pettenella¹

¹TESAF Dept. – University of Padova ²Etifor Srl

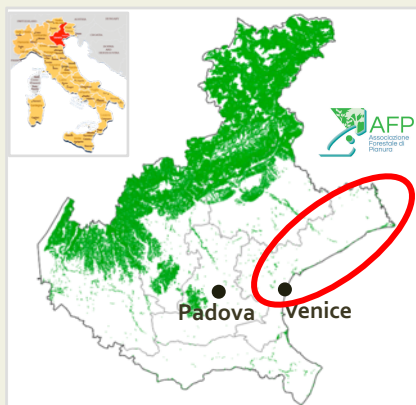


The project leading to this application has received funding from the European Union's Horizon 2020 research and innovation programme under grant agreement No 676754.

The Italian case study



Lowland Forest Association (*Associazione Forestale di Pianura – AFP*)



- Established in 2002
- An initiative of 8 municipalities in Eastern Veneto (350 ha)
- **Efficient, strategic and responsible management** of forest resources
- Now open also to private owners and managers → **16 members: 10 public + 6 private (500 ha)**
- **2018-2019: world-first application of the FSC Ecosystem Services Procedure** for a full set of 5 ecosystem services

<http://www.forestedipianura.it>



Three (main) forest types within AFP



Oak-hornbeam forests

Remnant/Old-growth + some newly planted forests
(afforestation/reforestation projects)



Riparian forests

Remnant/Old growth (black poplar and white willow)
mainly in protected areas



Coastal forests

Mainly **planted** forests
Native holm oak forests replaced by pine forests
(important for tourism and local identity e.g. place names)

(Some of) the main challenges

Environmentally valuable sites

(N2000, wetlands, old-growth forest remnants...)

Fertile farmlands

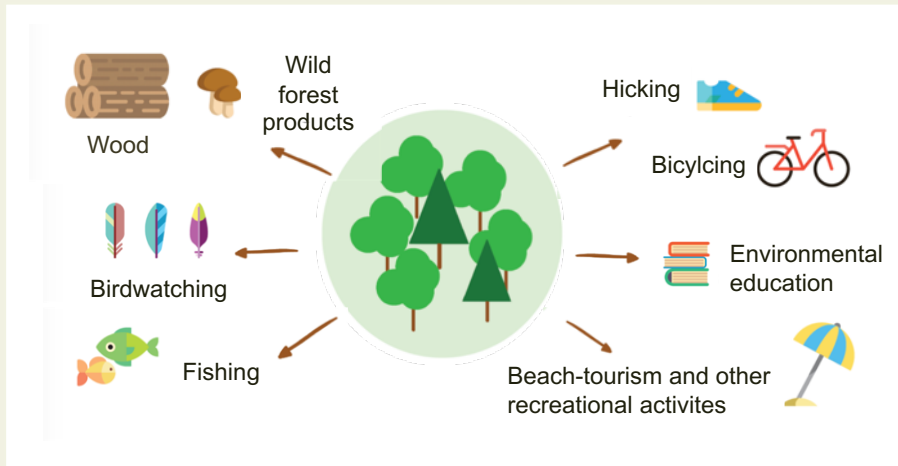
(annual crops)

Peri-urban, non-productive lowland forests close to densely populated areas

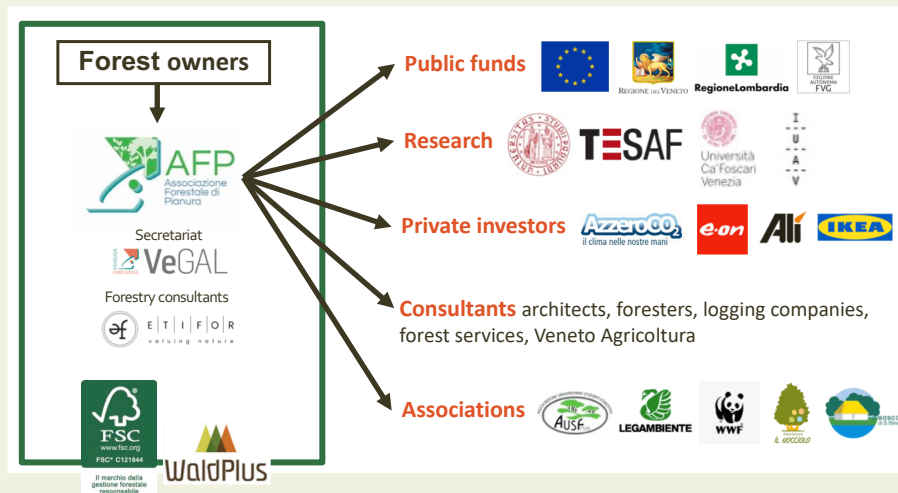
Tourism pressures & opportunities

(3M visitors/year, Summer tourism)

Managing forests to ensure multiple benefits



AFP Governance model



Main activities within ALTERFOR



Identification and analysis of **current forest management models (cFMM)** within AFP, ES assessment and stakeholders needs/expectations

Literature review, field visits, Master and PhD research/thesis, meetings, 1 workshop...



2 priorities: (i) **cultural and recreational ES**, (ii) **biodiversity conservation**

Identification of alternative **FMM (aFMM)** and discussion with stakeholders

1 workshop & demo-day (including field and demonstration activities), ES assessment, guidelines...



Current and alternative FMMs



Current FMM (cFMM) → minimal selective cutting + set-aside

Alternative FMM1 (aFMM1)

Recreational & habitat selective cutting

Oak hornbeam forests → **selective harvesting** depending on age distribution & tree vigor

Coastal forests → unstable pine trees removed + **selective thinning** in dense even-aged stands (holm oak regeneration)

Riparian forests → **selective harvesting** (conservation)

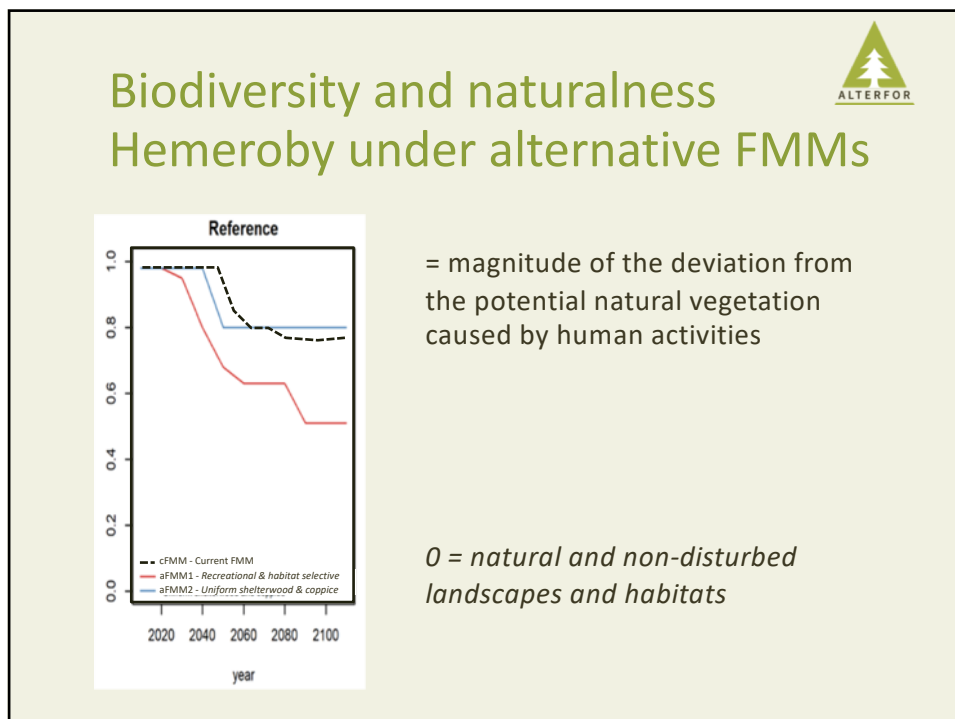
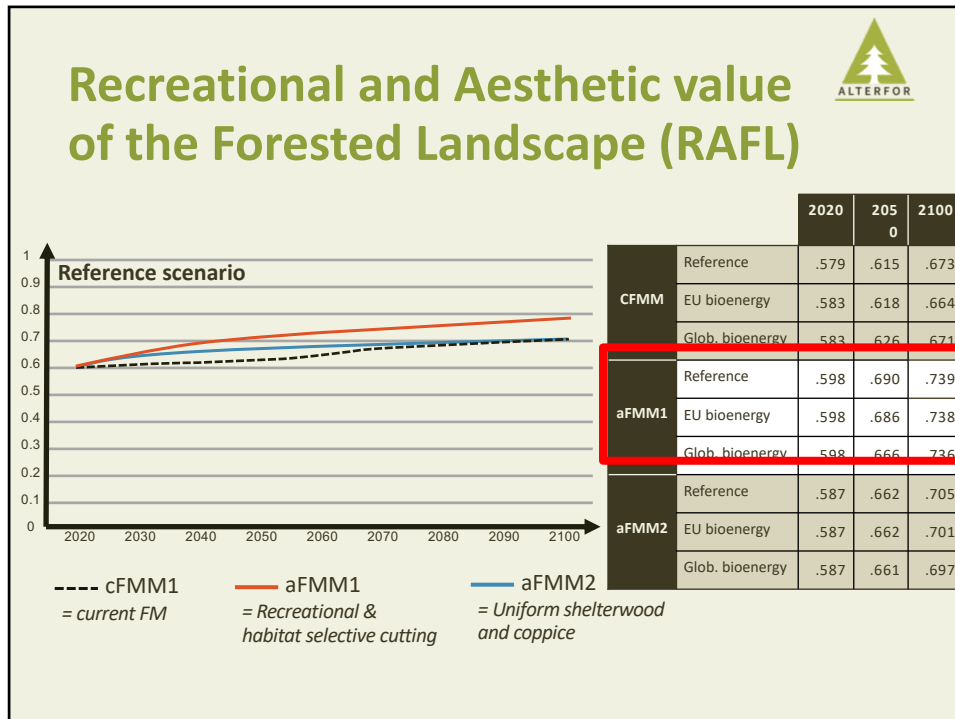
Alternative FMM2 (aFMM2)


Uniform shelterwood & coppice

Oak hornbeam forests → **uniform shelterwood**

Coastal forests → 90% gradually **converted** to holm oak forests and **coppiced**, 10% managed as pine forests

Riparian forests → **selective harvesting** (conservation)



Barriers to aFMMs

aFMM2 (*Uniform shelterwood & coppice*)
→ not fully consistent with current legislative framework

aFMM1 (*Recreational and habitat selective management model*)

- **Technical constraints** (e.g. limited “on-the-ground” experiences in management of relict lowland forests)
- People **not-familiar** with forestry (“harvesting as a shame”)
- Co-existence of **different views/interests**
→ possible **conflicts** → **negotiation & governance** solutions



Alterfor guidelines (work in progress)

Guidelines on FM & cultural services, including:

- Silvicultural and management measures
- Mitigation actions on negative aspects on environment/landscape
- Indications for infrastructures (equipped areas, paths...)
- Economic and normative issues
- Governance aspects

Additional coming-soon activities:

- On-site and off-site info
- Demonstration site
- Participatory management plan

